

## E-Waste Program Environmental Solutions

### Compliance Laws

- \*RoHS
- \*WEEE Documentation
- \*Take-back
- \*America, EU, Asia

### Environmental

- \*Auditable Downstream
- \*Recycle Within Origin
- \*No landfill
- \*EPA

### Financial

- \*Remarket
- \*Reuse
- \*Recycle

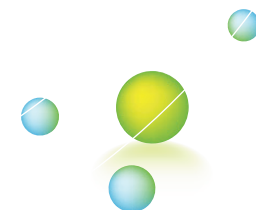
## AssetMover

1-800-516-4272  
408-591-4010 Tim  
408-839-2920 Agustin  
[www.assetmover.com](http://www.assetmover.com)



## AssetMover

Asset Optimization  
Manage Your Resources  
Asset Mover can help you manage your  
electronic assets while being compliant to  
environmental laws and regulations.



## Other Products

### Compliance and Asset Optimization

Assetmovers is single point source for collection, treatment and recycling of e-waste globally through its direct offices and logistics partners. Certificates of destruction, recycling and reporting to authorities to meet statutory requirements are also provided. A majority and minority company ownership.

Assetmovers provides complete product asset optimization service globally including, data center decommissioning, material pickup, re-use and recycling as per the agreement with our valuable customers.

Electronic data erasure service as per DoD specifications will ensure that any and all private information and proprietary data is cleaned from the drive and HDD recertified. Disc wiping software from Blancco Limited and other custom software for varieties of hard drives are used to meet DOD 5220.22-M, DOD 5220.22-M ECE and HIPPA requirements.

### EU WEEE Directive Compliance Service -

Assetmovers has performed Evaluation and Certification for WEEE Compliance as per Directive 2002/96/EC OF THE EUROPEAN PARLIAMENT AND OF THE COUNCIL Of 27 January 2003 on waste electrical and electronic equipment (WEEE) for multiple generation products for High-Tech companies through Rate of Recovery and Reuse Analysis by identifying and classifying material as per Annex II of the Directive.

The products were also evaluated for ease of dismantling for recovery, reuse, ease of service/repair, ease of selective removal of components/sub-assemblies, and design for environment. Identification of components and sub-assemblies for recovery and/or reuse and progressive dismantling procedures through graphical illustration were provided.

Assetmovers also offers total material disclosure service to homogenous level. This will facilitate identifying materials of high risk and identifying alternate components.

